

## UPDATE – WINTER 2008

### This Issue.....

- Advances in treatment of glaucoma and equine recurrent uveitis
- Buzzard Cataract Surgery
- Ophthalmology clinics in Hereford, Somerset and Devon
- Equine vision centre – large animal ophthalmology CPD day planned for Feb 2008
- New Video endoscopy suite



Rowe Referrals is a team of dedicated and experienced Veterinary Surgeons, nurses and support staff based in North Bristol, conveniently located two minutes from the M4/5 junction. Our clinicians have a wide range of expertise in diverse fields which allows us to readily manage complex cases, drawing on the expertise of the other Referral departments as needed. We also benefit from the facilities of a modern purpose built Veterinary Hospital housing a dedicated emergency and critical care service. We aim to provide a prompt, efficient and high quality service to both the Veterinary Surgeon and their clients by combining optimal facilities with good communication between all parties. We are always happy to discuss cases.

### Neurology

#### Mike Targett MA VetMB PhD MRCVS

Mike Targett graduated with MA, VetMB from the department of Clinical Veterinary Medicine University of Cambridge. He carried out further post graduate studies at Cambridge obtaining a PhD before undertaking a period as University Assistant Surgeon within the Queens Veterinary School Hospital, University of Cambridge. In 1998 he moved to a lectureship at the Royal Veterinary College, London leading the small animal neurology service within the Queen Mother Hospital. Following a period in private practice offering a second opinion small animal neurology referral service in the North West of England he joined the School of Veterinary Medicine and Science in 2007. Mike Targett is a clinical Associate Professor in Veterinary Neurology. Mike is module convenor for the Neuroscience modules in the undergraduate curriculum. He is a Royal College of Veterinary Surgeons and European Specialist in Veterinary Neurology and is a Fellow of the Higher Education Academy.

Whilst based at the new Nottingham University Veterinary School we are very proud that Mike continues to offer a visiting neurology referral service for us. These are booked to coincide with the MRI sessions and allow a full neurology consultation, examination, MRI investigation if indicated and preliminary report to be offered as a same day service.



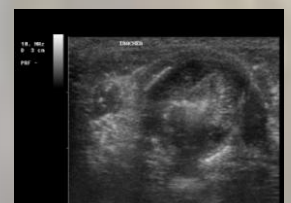
### Diagnostic Imaging

#### Margaret Costello MVB, DVR, Dip.ECVDI, MRCVS. RCVS and European Specialist in Diagnostic Imaging.

We are delighted to be able to say that Maggs continues to be able to offer imaging consultations at our Bristol Hospital. Maggs currently uses a state of the art digital system equipped with colour and power Doppler, five broadband probes (10 MHz linear, 7.5 MHz microconvex linear & 3 electronic phased array probes, 3.5-10 MHz) allow her great versatility. Images are crisp and sharp due to full digital technology. It is equipped with some of the latest technology including tissue enhancement and contrast harmonic ultrasound. Abdominal ultrasound and cardiac ultrasounds are offered routinely and the choice of probes means every size of animal is well catered for. The 10 MHz linear probe makes examination of superficial tissues and small parts much easier e.g. thyroid and parathyroid glands. It is useful in the investigation of hypercalcemia and masses in the neck, which may be thyroid, salivary etc. The larynx and trachea are also amenable to examination.



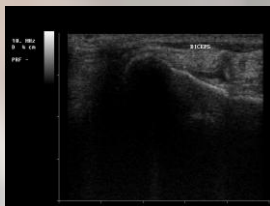
Parathyroid mass



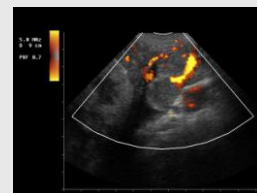
Tracheal mass

## Diagnostic Imaging

High quality musculoskeletal examinations are also possible with this probe. Ultrasound is under utilised in the evaluation of shoulder lameness. Most of the shoulder can be easily examined with ultrasound, which is useful as this is a tricky area to evaluate fully with radiography. MRI is expensive and may be difficult to interpret. Even arthroscopy may miss lesions that can be seen clearly on ultrasound.



Biceps partial tear & effusion



Adrenal mass invading the caudal vena cava

Vascular ultrasound has great clarity as illustrated by the Caval thrombus in a dog with Cushing's seen on the right. Power Doppler technology adds further information as illustrated in the adrenal mass above right.

Ocular examinations are very worthwhile with the new system due to enhanced near field resolution and improved image clarity. Conditions affecting the iris, lens, retina as well as retro-bulbar conditions will be now be more amenable to examination.



## Medicine

### Kate Sutcliffe BVSc, Cert SAM, MRCVS

Kate is based at our Yate clinic. With a special interest in internal medicine and with access to a new video-endoscopy suite Kate is an invaluable asset to the referral service. Kate concentrates on supporting the other referral services rather than offering a primary medicine referral service.

## Oncology

### Rob Harper BVM&S, MRCVS

Based in our Bristol hospital Rob continues to offer a comprehensive medical and surgical oncology referral service. Qualified from Edinburgh in 1976 he has worked exclusively in small animal practice since then, both as a general practitioner and in more specialised practice. He lives in England's smallest city, Wells in Somerset, with his wife Helen, who is also a veterinary surgeon, and two demanding Burmese cats. Outside of veterinary work his interests are in outdoor pursuits – in particular caving: as well as caving regularly in the UK and Europe he has organised expeditions to Peru, Alaska, Meghalaya (N.E.India), Sulawesi, Thailand and Panama and has been elected as a Fellow of the Royal Geographical Society.



Rob in Panama with an orphan monkey

Both surgical and medical oncology have fascinated him for many years leading him to obtain a post-graduate degree in Clinical Oncology based at the Cancer Research Institute in Birmingham. Rob is happy to give advice or see referrals in any area of small animal oncology and has a particular interest in the management of haemangiosarcoma in the dog.

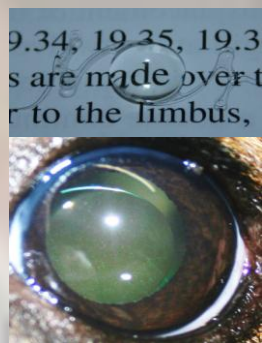
## Ophthalmology

### Tim Knott BSc(hons), BVSc, Cert V Ophthal, MRCVS Elena Romero LDOVet, Cert V Ophthal, MRCVS Brian Patterson BVM&S, Cert V Ophthal, MRCVS

The Ophthalmology service continues to grow and at present employs three full-time Veterinary Ophthalmologists. The eye clinic is based in Thornbury, located 5 minutes north of the M4 M5 junction. Services offered include cataract surgery by phacoemulsification, electroretinography, advanced ophthalmic imaging, glaucoma laser and shunt surgery, corneal transplant, reconstructive ophthalmic oncologic surgery and ocular prosthesis surgery. Equine and exotic referrals are encouraged.

Glaucoma remains the commonest cause of enucleation in our clinic. Recent advances in the management of glaucoma are being integrated into the eye clinics approach to these cases. We are particularly excited about the role of Video-endoscopic laser treatment whilst the use of new glaucoma shunt designs have been used successfully to help manage this most difficult of ophthalmic diseases in an increasing number of patients.

## Ophthalmology



Advances in the treatment of lens luxation have also been more routinely offered over the past few years. In particular the use of “key hole” surgery to remove subluxated and luxated lenses is becoming our preferred approach and the use of prosthetic lens implants following lens removal is also now offered routinely. The ability to replace the abnormal lens with a prosthetic intra-ocular lens (left top; sutured IOL, left bottom; suture IOL in place following lens removal) offers these patients an alternative to the visual disability seen following lens removal without prosthetic lens implantation. The combination of prosthetic lens implantation and endoscopic laser glaucoma surgery may prove to offer a much better long term prognosis for these patients.

We have seen many more cases of Equine Recurrent Uveitis (ERU) this year than previously. Cases have been more severe and more difficult to control. This has coincided with the availability of a new technique for the long term medication of this frustrating condition. We have now successfully implanted a number of intra-ocular devices designed to deliver Cyclosporin for 3-5 years. Cyclosporin, whilst being very effective in control of chronic uveitis does not penetrate the cornea and for this reason has until now been ineffective in the management of ERU.

Referrals are accepted for all species, reduced referral fees are offered for small mammals (rabbits, guinea pigs, hamsters etc.). One challenging exotic patient we met this year was “B\*\*tard” the Buzzard. Presenting with sudden onset blindness this young Buzzard was found to have a detached retina in her left eye and an advanced cataract in her left eye. With the assistance of Chris from the exotic referral department and following electrical testing of her retinal function B\*\*tard underwent successful cataract removal and prosthetic lens implantation.

Equine, camelid and other large animal referrals are welcomed. The equine vision centre is based at our Wotton under Edge clinic where full anaesthesia and hospitalisation facilities are available. Equine patients can be seen by arrangement at several equine hospitals in the South West and South Wales. Intra-ocular surgery (including cataract surgery), advanced corneal surgical techniques, laser treatment of glaucoma, slow release drug implantation for recurrent uveitis and ocular prosthetic surgery are all offered at the Equine eye clinic. A large animal ophthalmology CPD day is planned for early Feb 2009 watch the web site for details.

Visiting eye clinics are currently held at: Brookfield Veterinary Hospital (Hereford), Bristol University Vet School (Langford), Axe Valley Veterinary Practice (Blackford, Wedmore, Somerset) and Isca Veterinary Surgery (Exeter).

Clinics can be organised by arrangement at other clinics in the South West – please contact Tim at the eye clinic if you are interested in this service.

Referrals are booked through the eye clinic direct on 01454 415478 and we are always happy to give telephone or email advice, both the Eye Clinic and the Equine Vision Centre can be reached directly on 01454 415478 or eyes@rowevetgroup.com.

## Surgery

### Jon Shippam BVSc Cert SAS MRCVS

Jon has been offering surgical referrals in the Bristol area for some time and continues to see cases for us. A Liverpool graduate Jon's interests encompass all areas of surgery including head, neck, thoracic, abdominal and perineal surgeries, oncology and reconstructive surgery, external skeletal fixation, AO internal fixation and joint surgery. In addition to our new resident surgeon we are also very pleased to be able to call on the services of several eminent soft tissue and orthopaedic surgeons where required. Jon is happy to discuss cases prior to referral and can be reached via the hospital number, 01454 275000.

## Exotic animal medicine and surgery

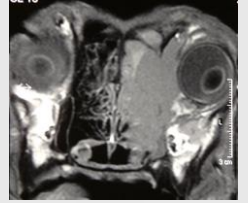
### Chris Artingstall BVSc, MRCVS

Chris, a past secretary of the British Zoological Veterinary Society, was the chief Veterinary Officer for Bristol Zoo for over a decade. Chris and a number of his colleagues in the Rowe Veterinary Group still provide the emergency cover for Bristol Zoo and Chris retains an active interest in all exotic species. On a regular basis this will include Llama's, Alpacas, primate, avian and reptile patients as well as our increasingly popular small furry patients (rabbits, guinea pigs and ferrets). Recent interesting cases include egg peritonitis in an Ostrich and a Buzzard with cataracts..

## MRI

### Mr Richard Rowe BVMS, MRCVS

MRI services are offered on a regular basis at our Bristol hospital. Trained radiographers with extensive experience with Veterinary species scan MRI cases. Scans can be arranged in association with referral to one of our clinicians or as a stand-alone service. Dates of scans can be obtained via the web site or on 01454 275000. If you have any questions about MRI please contact Mr Richard Rowe on the above number.



If you have a case you think may benefit from MRI then please telephone us to discuss the case or to arrange an appointment.

Nasal tumour causing exophthalmos

## Physiotherapy

Helen Cann, Veterinary Physiotherapist, (MSc, MCSP, Cat A member of ACPAT) continues to provide Physiotherapy for Equine, Canine and occasionally Feline cases.

Physiotherapy is a useful adjunct to Veterinary care in a variety of acute and chronic cases. These include back or neck pain, post orthopaedic surgery, neurological conditions, sports injuries, performance or functional difficulties and soft tissue injuries.

Small animal consultations are available at the Wotton site or the Bradley Stoke Hospital and Equine clients are visited at home. Helen can be contacted directly at [helencann@hotmail.com](mailto:helencann@hotmail.com) or telephone 01453 844981 to refer cases for Physiotherapy.



Further information on physiotherapy can be found on the ACPAT website [www.acpat.org](http://www.acpat.org)

## Dermatology

### Nick Hartley Vet MB, CertSAD, MRCVS

Nick provides a full dermatology referral service including intra-dermal skin testing still considered the gold standard for identification of allergens in allergic skin disease.

---

All of the Rowe Referrals team would like to thank you for entrusting your patients to our care during 2008 and are looking forward to getting to know those of you who haven't used us before in the coming year.

Finally we wish all of our colleagues past, present and future a fantastic Christmas and a prosperous new year.

